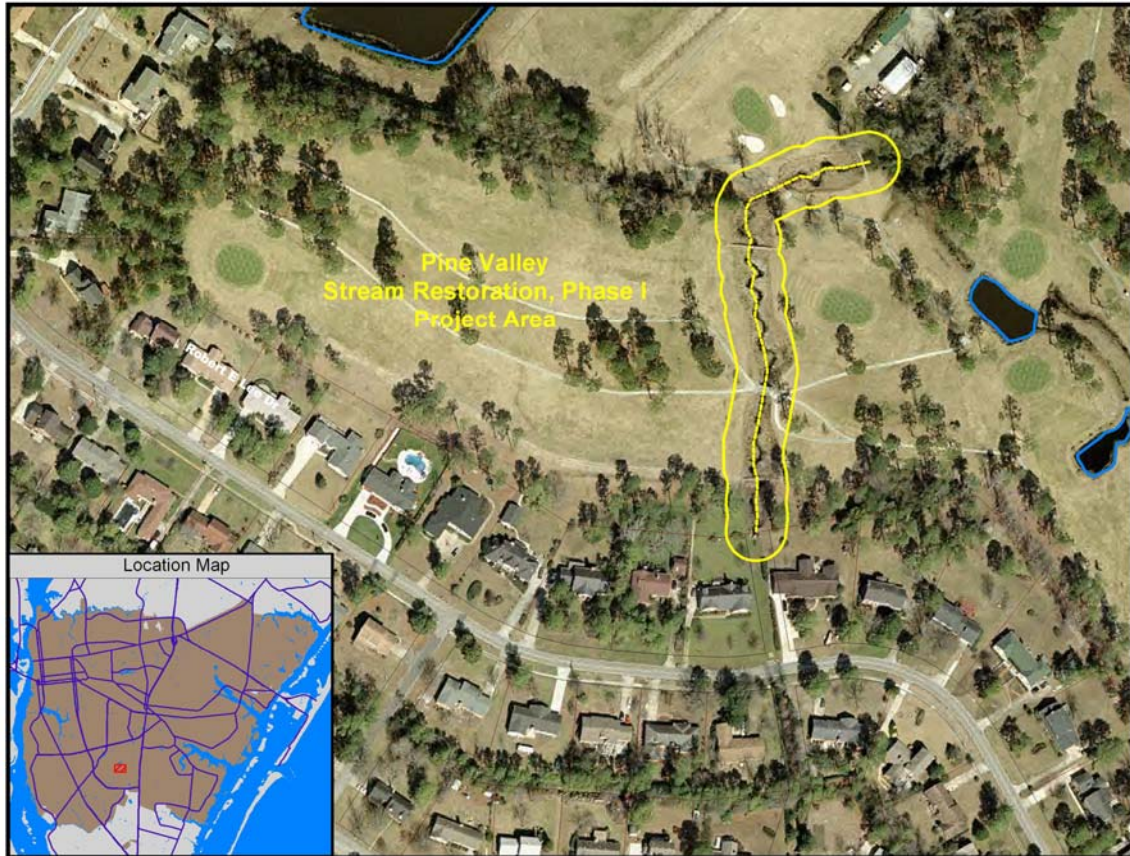


## Pine Valley Country Club Stream Restoration, Phase I

Year Funded: 1999

Cost: \$140,000 (funded by the Clean Water Management Trust Fund through the NH Tidal Creeks Program)

Description: The City of Wilmington, Clean Water Management Trust Fund, New Hanover Tidal Creeks Program, NC Sea Grant and the Pine Valley Country Club restored an eroding ditch on holes 15, 16 and 17 of the club's golf course natural stream restoration techniques. The former straight line ditch now has a meandering flow pattern, a wide floodplain area and a native plant buffer along its 1000' length.



**Before**



**After**

