

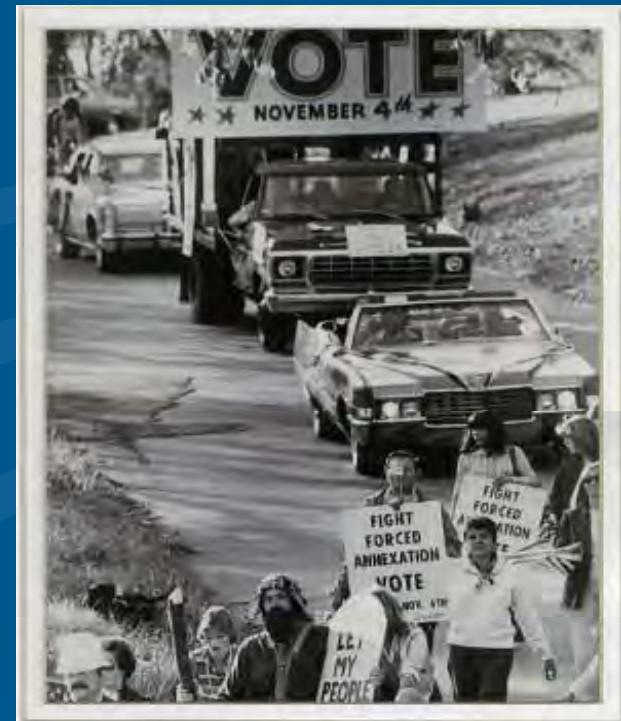
# Comprehensive Annexation Policy and Study Areas

August 10, 2010

Public Information Meeting

# Why an Annexation Policy?

- Comprehensive and objective approach
- Proactive and predictable
- Defines manageable steps



# The Public Information Element . . .

- provides up-front and accurate information to affected residents and property owners;
- provides opportunity for stakeholders to learn about how the annexation process works; and
- provides opportunity for stakeholders to learn more about available City services.

# Selection of Annexation Study Areas

- State qualifying criteria
- Existing services
- Needed services
- Ability to provide services



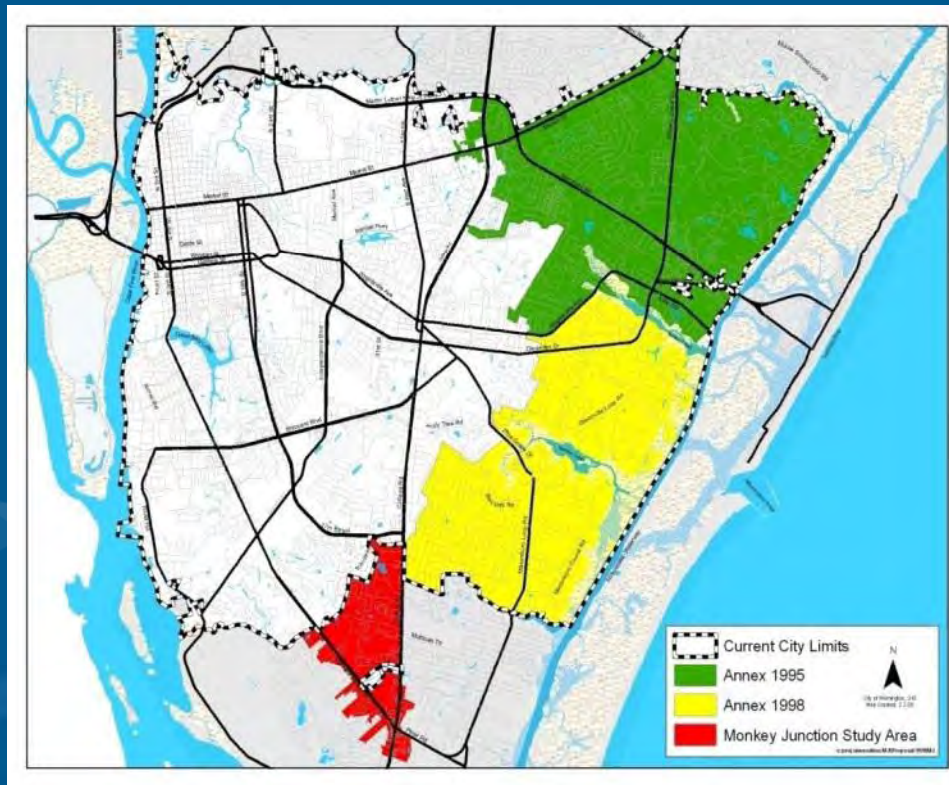
# State Qualifying Criteria

## for Annexation

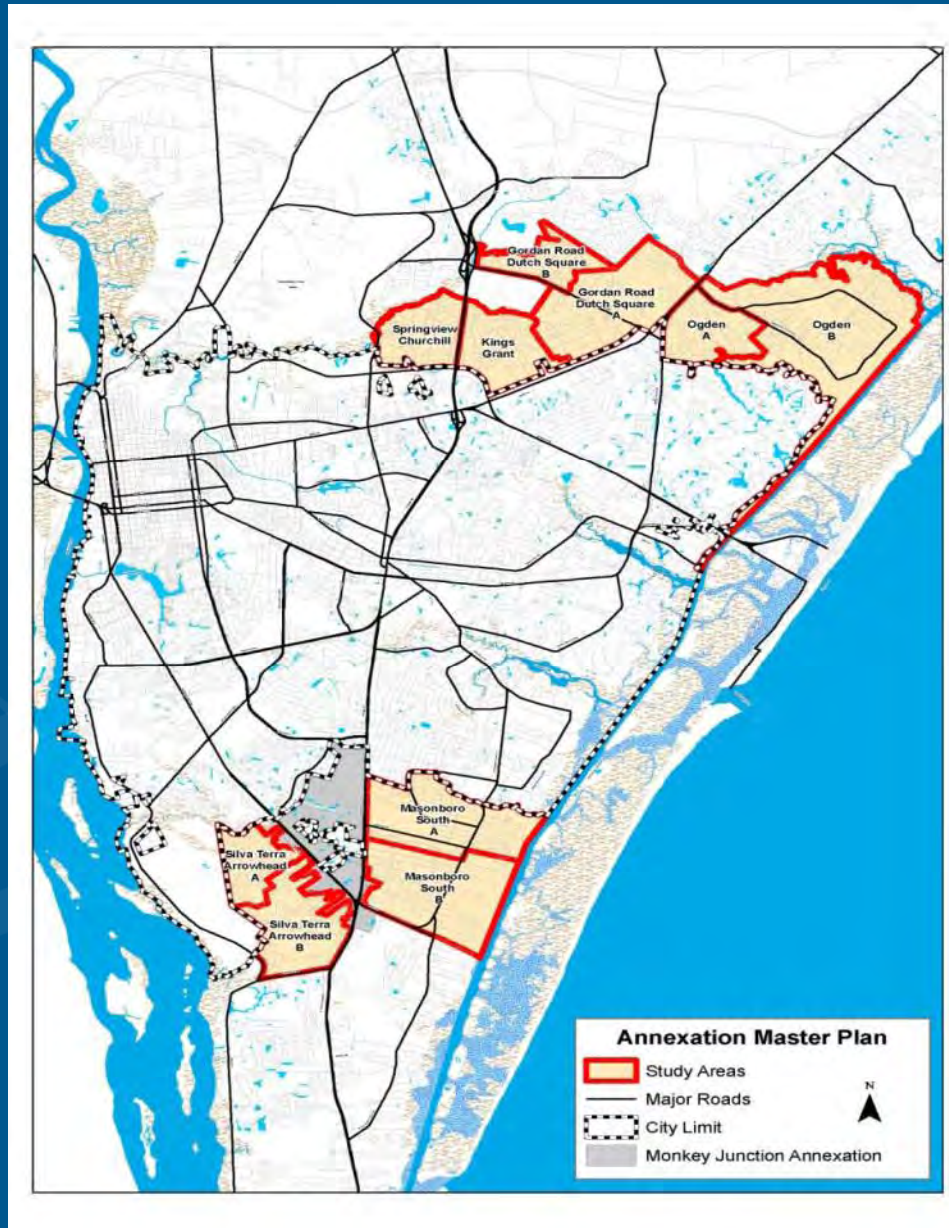
- Contiguity – 12.5% of the study area boundaries shared with the city's
- Density – 2.3 persons per acre
- Land use and lot sizes



# Previous Annexation Areas

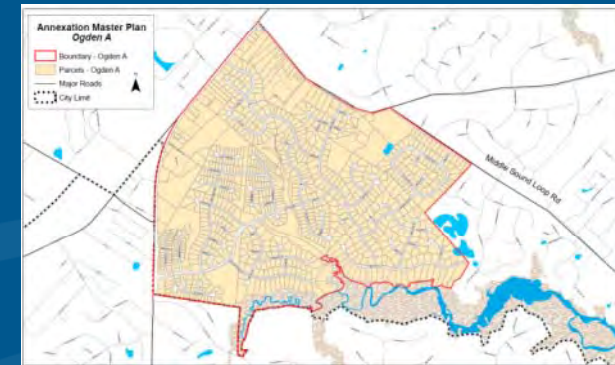


# Annexation Study Areas



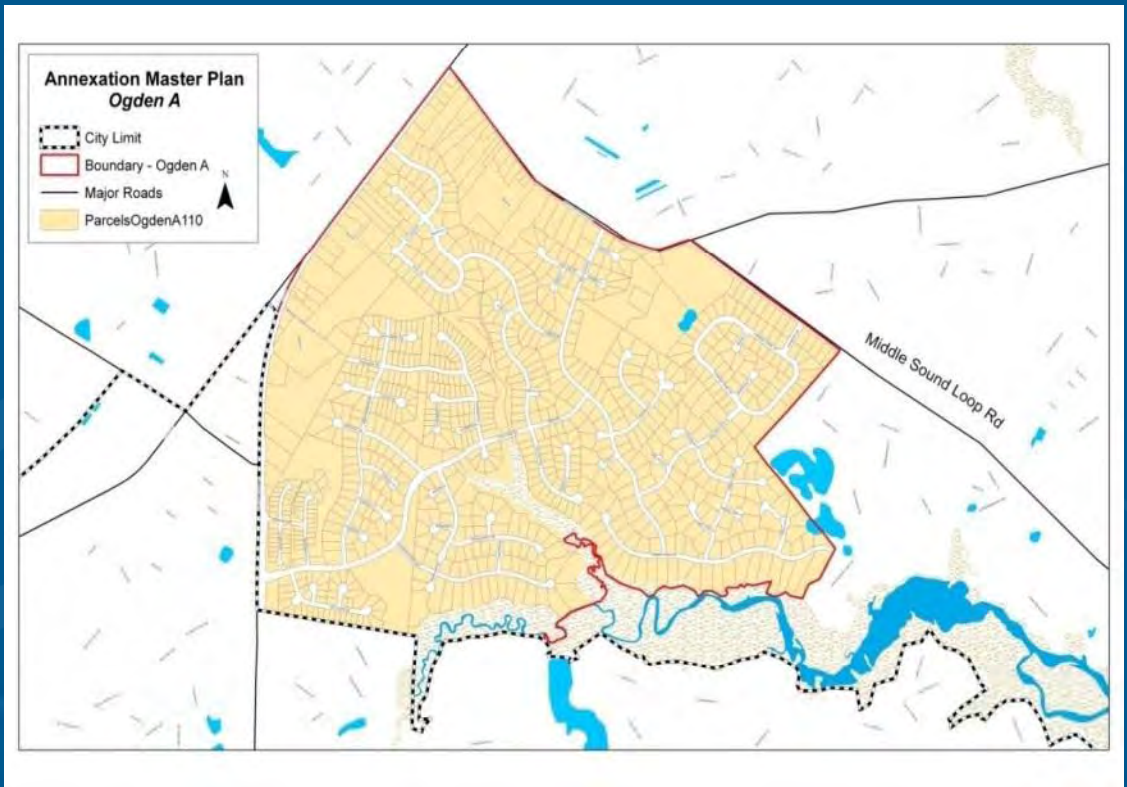
# Recommended Area Prioritization

1. Ogden A
2. Kings Grant
3. Masonboro South A
4. Silva Terra/Arrowhead A
5. Springview/Churchill
6. Gordon/Dutch A
7. Gordon/Dutch B
8. Ogden B
9. Masonboro South B
10. Silva Terra/Arrowhead B



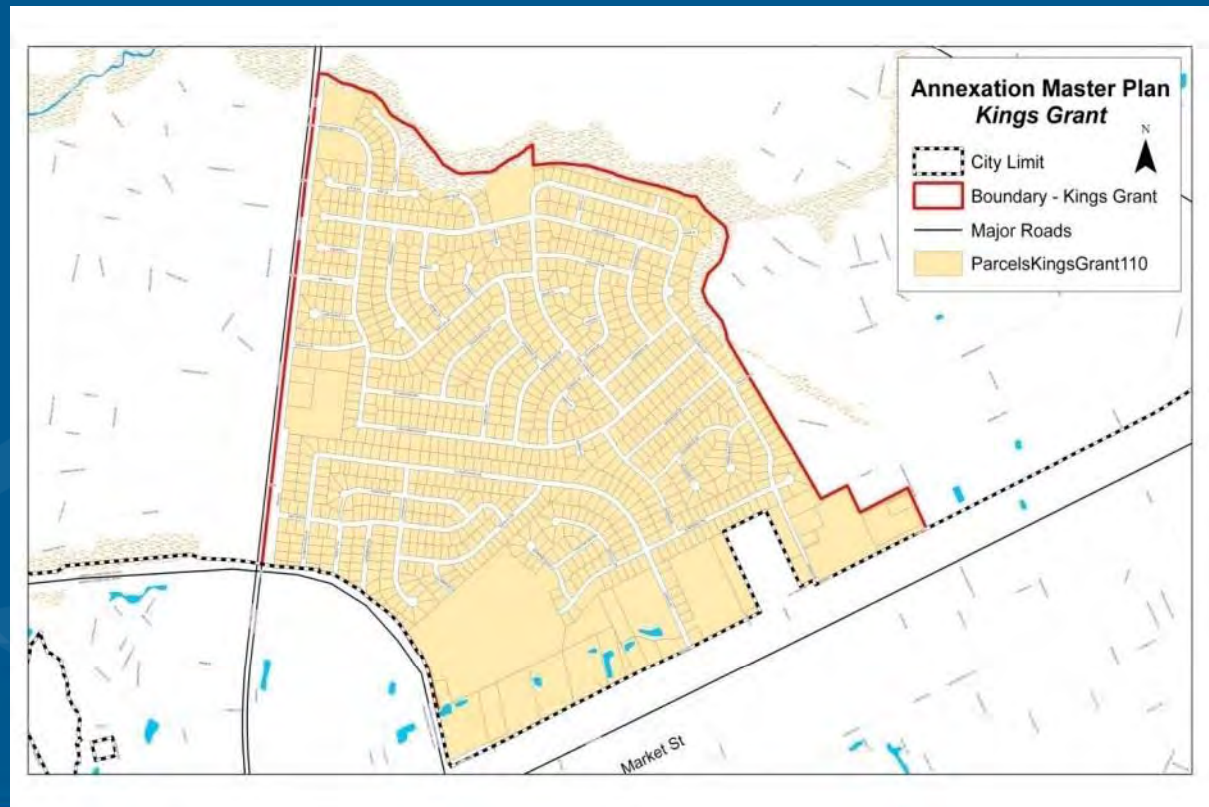
# Ogden A

El-Ogden, Pebble  
Cove,  
Timber Creek,  
Brandywine,  
Gorman Plantation,  
Covil Estates



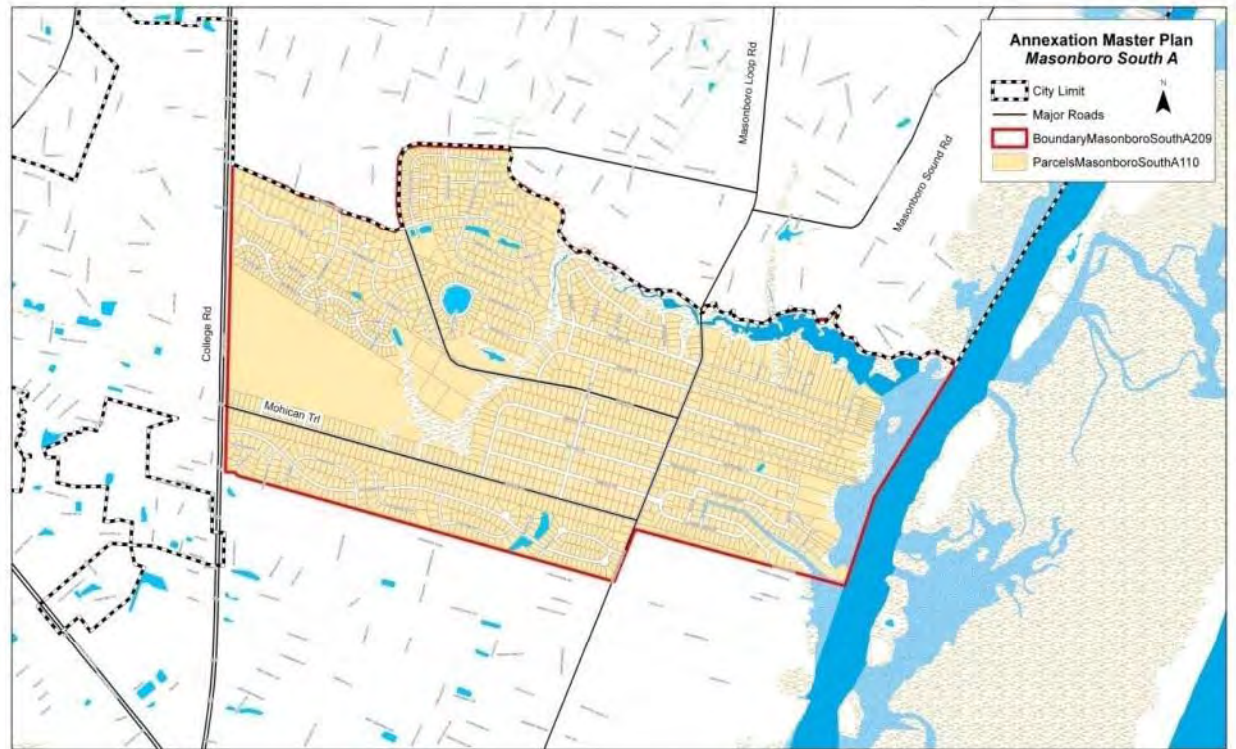
# Kings Grant

Kings Grant,  
Wildflower,  
Crestwood, and  
Market Street  
Commercial  
Properties



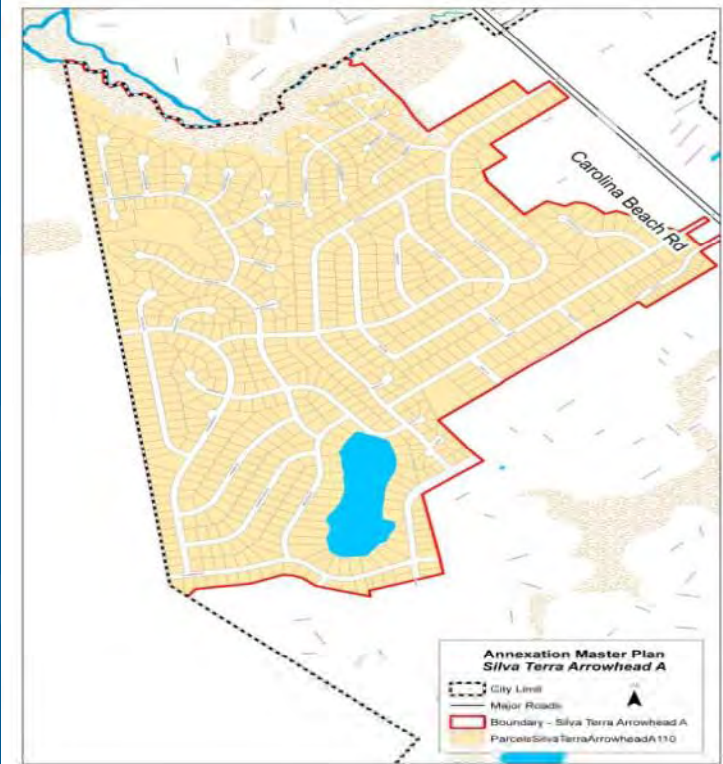
# Masonboro South A

Fox Run, Lansdown South, Masonboro Forest, Crosswinds, Tall Tree, Lake Renaissance, Channel Haven, Soundview, Tanglewood, Harbor Villa, Trails End, Pelican Point



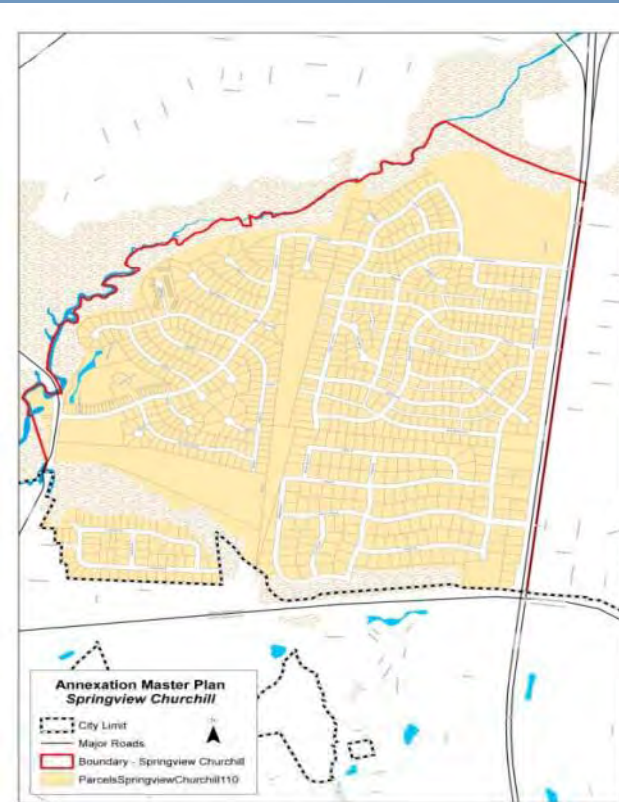
# Silva Terra/Arrowhead A

Silva Terra, Arrowhead,  
Huntington Forest,  
Linden Ridge, Treetops,  
and Sunpointe



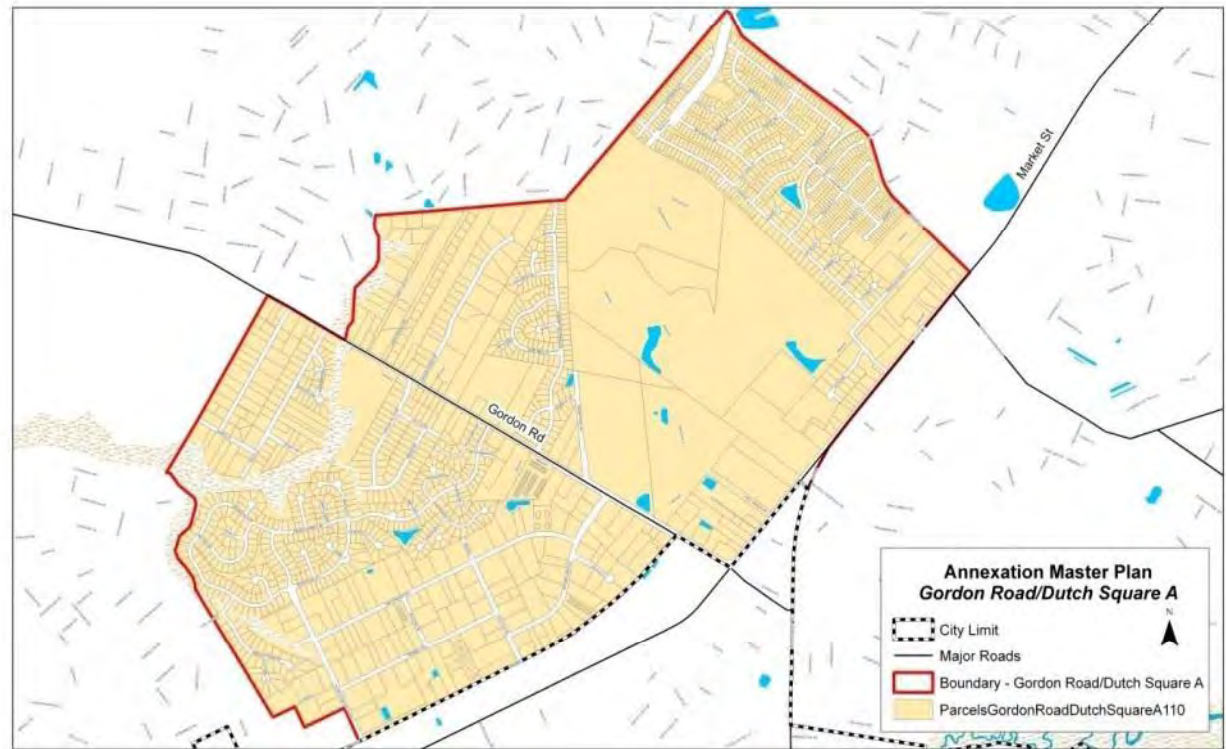
# Springview/Churchill

Springview,  
Churchill  
Estates,  
Deerbrook  
Condos,  
Alandale,  
Kings Grant



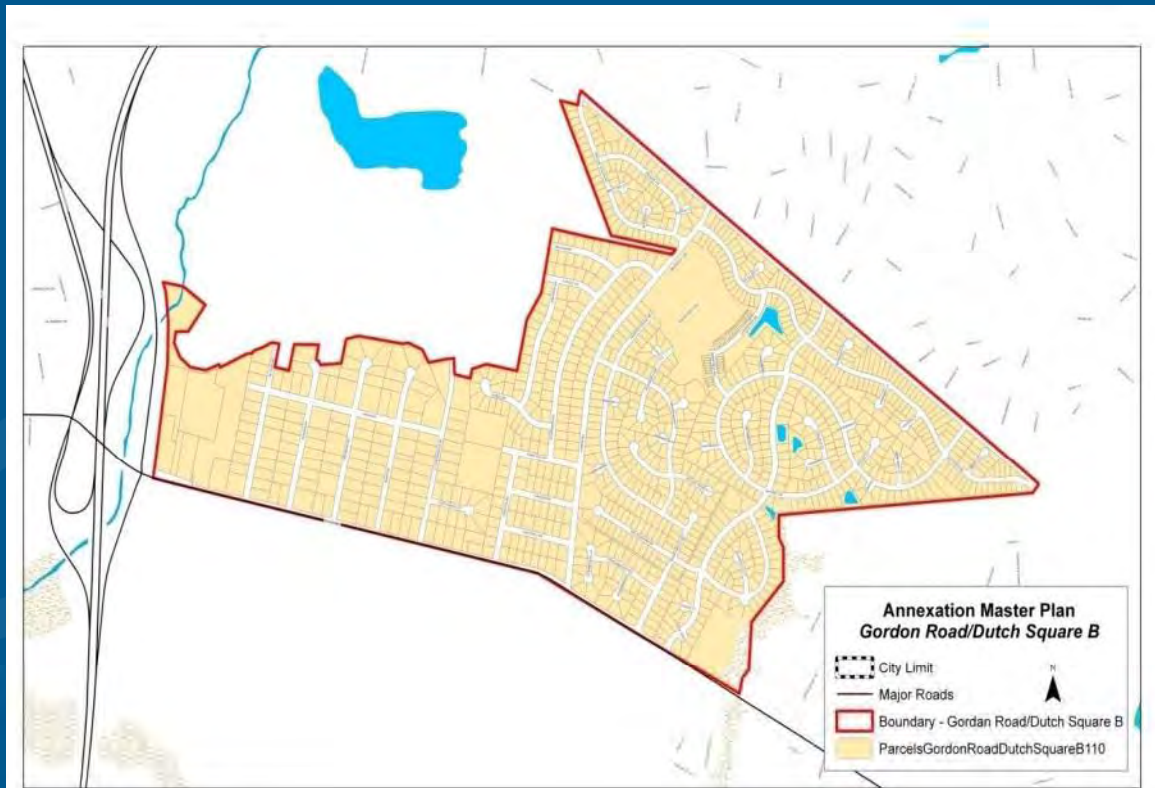
# Gordon/Dutch A

Dutch Square,  
Weatherwood,  
Mission Hills,  
Farrington Farms,  
West Bay Estates,  
and Cape Harbour  
Apartments



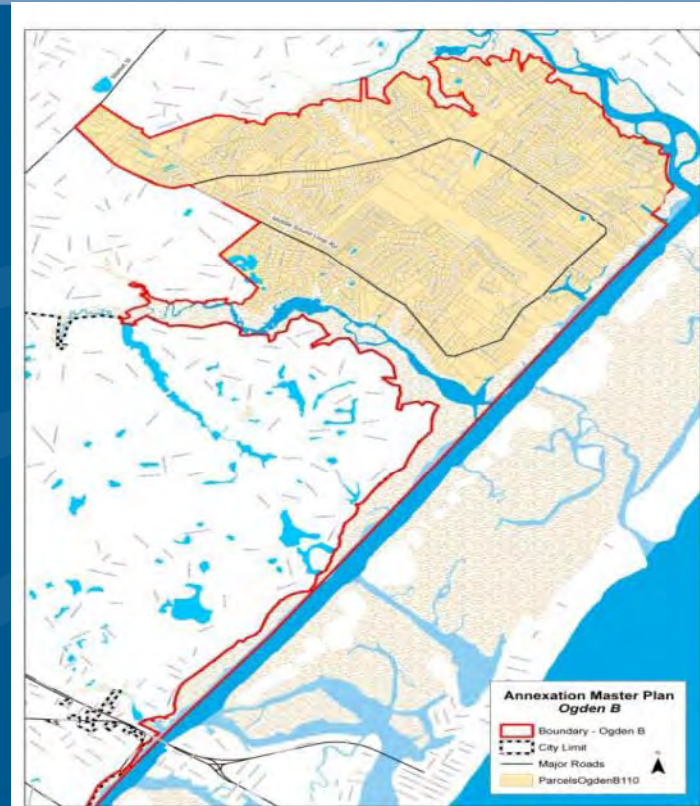
# Gordon/Dutch B

Sun Coast Villas,  
Meadowbrook, Gordon  
Woods, Weaver Acres,  
and Parkwood Estates



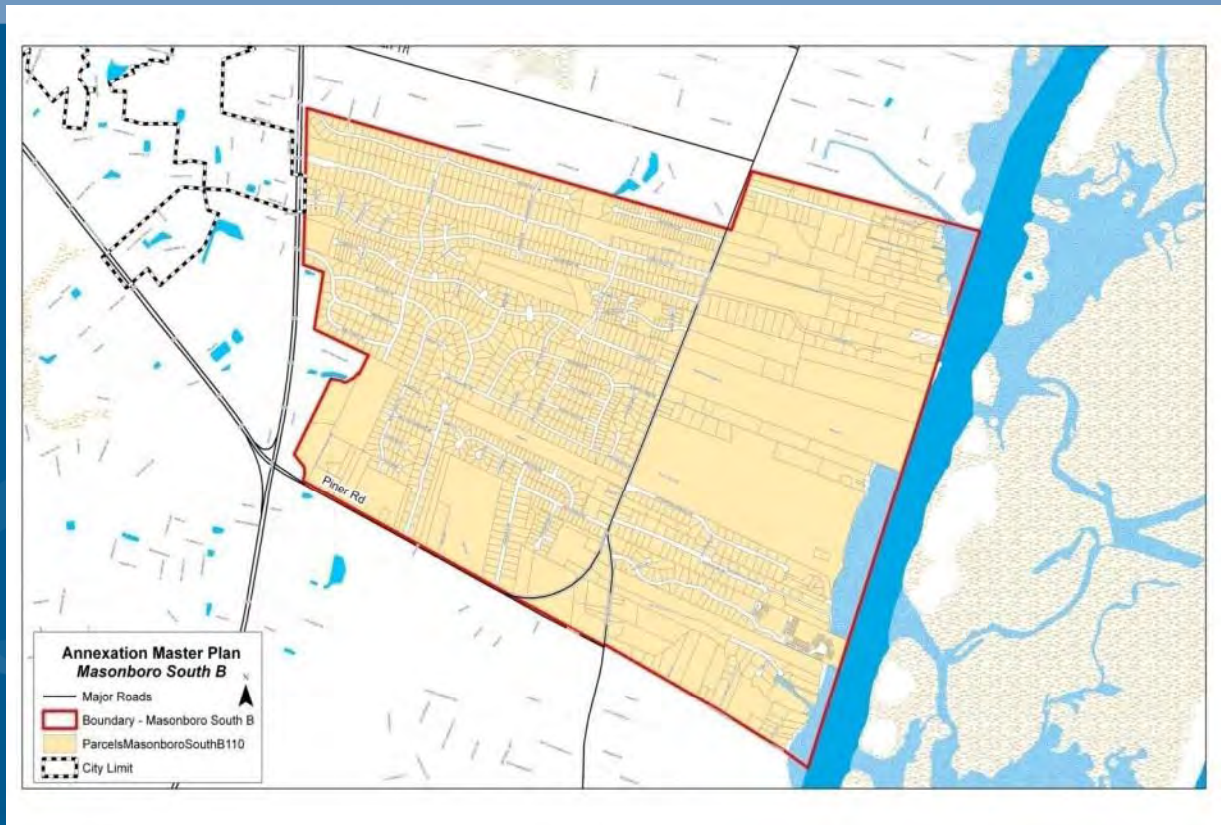
# Ogden B

Timber Creek Providence,  
Demarest Landing, Queens  
Pt., Sandy Brook, MiddlePoint,  
Stonybrook, Ocean View,  
North Bend, Treasure Cove,  
Emerald Forest, South Branch,  
Registers Place, Bridges  
Creek, Old Baymeade



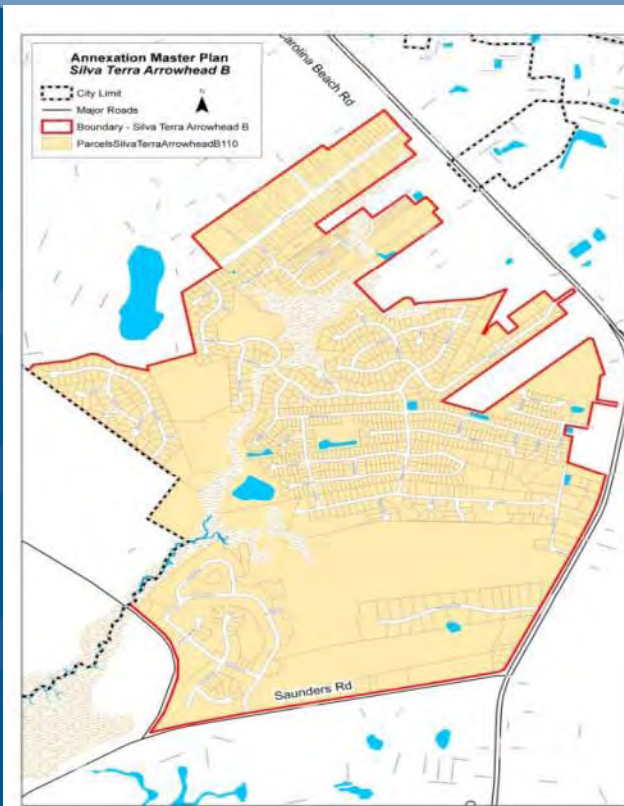
# Masonboro South B

Hidden Valley,  
Vineyard Green,  
Greenbriar, Wood  
Duck, Friendly  
Shores, Holiday Hills,  
Beacon Woods,  
Tangle Oaks,  
Waterford Place,  
Beyond the Branch



# Silva Terra/Arrowhead B

Archmill Place,  
Brewster Place,  
Marquis Hills, Silver  
Lake, Citrus Grove,  
Sycamore Grove,  
Equestrian Estates



# Establish 2-Year Phasing Plan

Resolution of  
Consideration

(June 2011)



Adoption of the formal  
annexation process

(2012)



Annexation effective June 30  
(June 2013)

## Next Steps . . .

August 17, 2010 City Council meeting

- Adopt the recommended Comprehensive Annexation Policies & area prioritization

Prior to June 2011

- CC to adopt the Resolution of Consideration for the first study area(s)

**For more information please visit the  
City's website at:**

**<http://www.wilmingtonnc.gov>**