

Comprehensive Annexation Policy

Development Services
Department

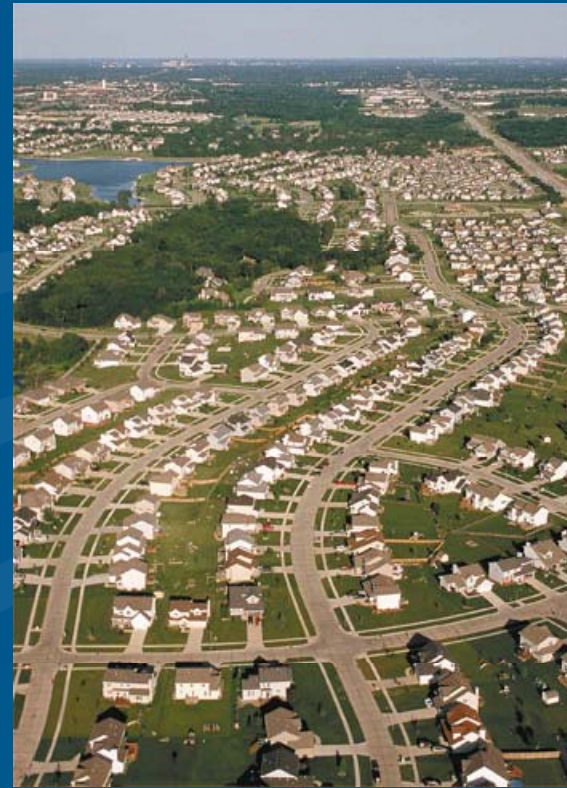
February 15, 2010

Why an annexation plan & policy?

- Comprehensive approach
- Objective selection
- Proactive and predictable
- Manageable steps

Selection of annexation study areas

- State qualifying standards
- Existing services
- Service needs
- Ability to provide services



State qualifying standards

Contiguous boundary

> 12.5%

Urban purposes test

Population density ≥ 2.3

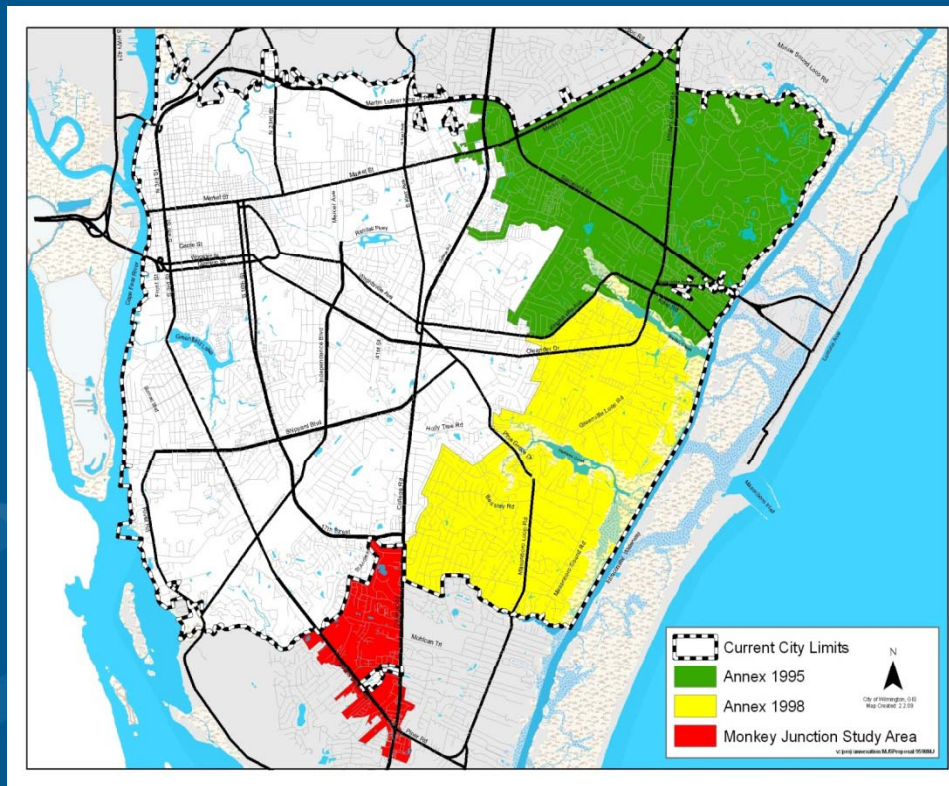
OR

1 person per acre and $\geq 60\%$ parcels ≤ 3 acres and
 $\geq 65\%$ parcels ≤ 1 acre

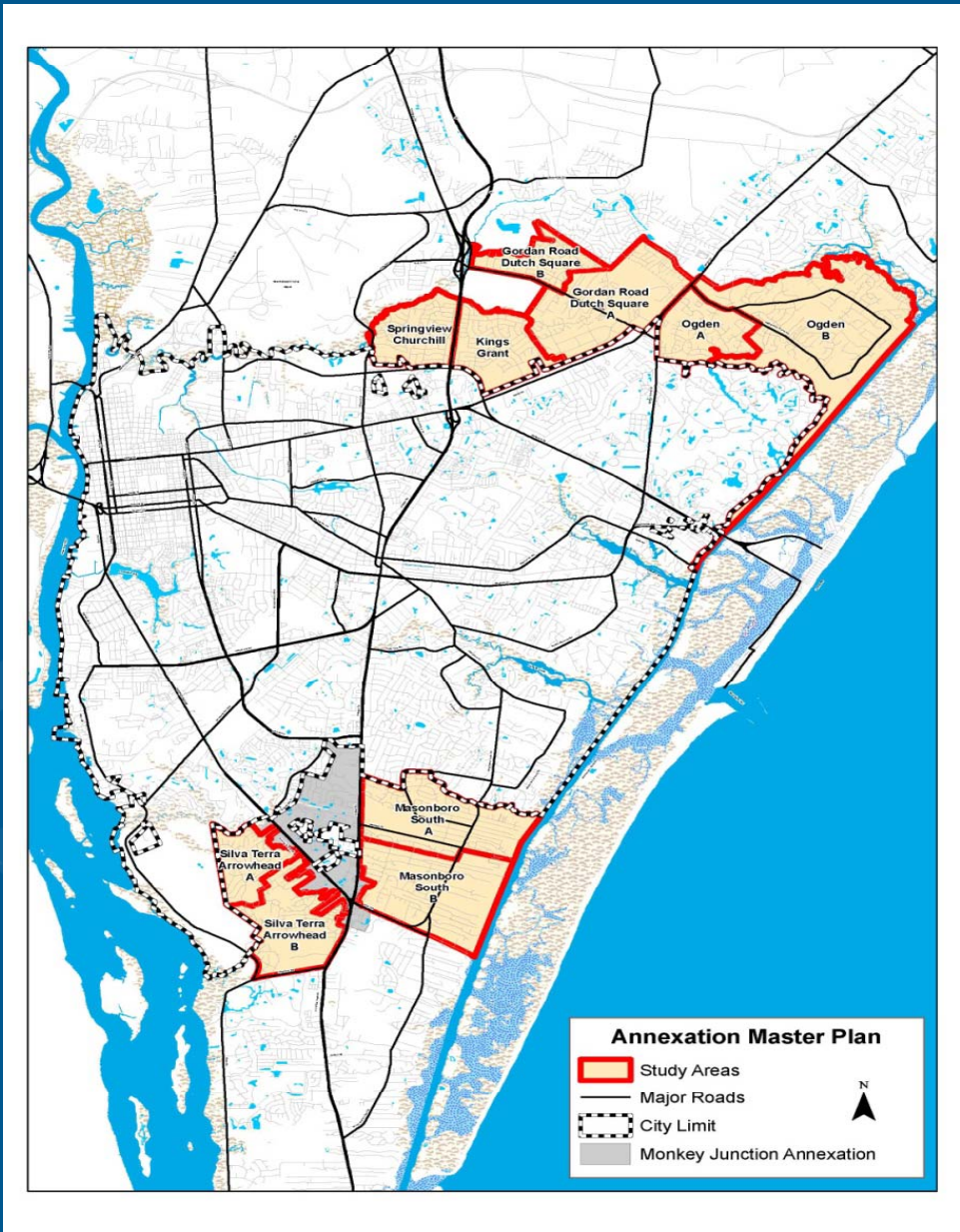
OR

$\geq 60\%$ total lots in non-agricultural use and 60% of
residential lots are ≤ 3 acres

Previous and current annexation areas



Study Areas



Study Area	Density 2.3+/ac	Contiguity (12.5%)
Gordon/Dutch B	6.55	0.00%
Silva Terra/Arrowhead A	5.11	43.83%
Kings Grant	4.3	40.79%
Gordon/Dutch Square	3.69	14.86%
Silva Terra/Arrowhead	3.59	28.14%
Ogden A	3.53	31.22%
Springview/Churchill	3.47	32.96%
Masonboro South A	3.07	44.93%
Silva Terra/Arrowhead B	2.78	12%
Masonboro South	2.77	33.23%
Ogden	2.51	40.96%
Masonboro South B	2.49	0.00%
Ogden B	2.42	62%
Gordon/Dutch A	2.35	22.82%

Study Area	Contiguity / Density Factor
Silva Terra/Arrowhead A	22
Kings Grant	19
Masonboro South A	17
Ogden B	14
Springview/Churchill	13
Ogden A	13
Silva Terra/Arrowhead	13
Ogden	12
Gordon/Dutch Square	12
Masonboro South	11
Silva Terra/Arrowhead B	6
Gordon/Dutch A	4
Gordon/Dutch B	0
Masonboro South B	0

Study Areas by Water/Hydrant Needs

Study Area	Water/ Hydrant Needs
Ogden	1
Silva Terra/Arrowhead B	2
Silva Terra/Arrowhead	2
Masonboro South B	2
Gordon/Dutch B	2
Gordon/Dutch Square	2
Gordon/Dutch A	2
Masonboro South	2
Silva Terra/Arrowhead A	2
Masonboro South A	2
Ogden B	2
Ogden A	3
Springview/Churchill	3
Kings Grant	3

1 Substantial improvement needed

2 Some improvement needed

3 Adequate

Study Areas by Sewer Needs

Study Area	Sewer Needs
Silva Terra/Arrowhead B	1
Silva Terra/Arrowhead	2
Masonboro South B	2
Gordon/Dutch B	2
Gordon/Dutch Square	2
Gordon/Dutch A	2
Masonboro South	2
Silva Terra/Arrowhead A	2
Ogden	2
Masonboro South A	2
Ogden B	2
Ogden A	3
Springview/Churchill	3
Kings Grant	3

1 Substantial improvement needed

2 Some improvement needed

3 Adequate

Study Areas by Stormwater Needs

Study Area	Stormwater Needs
Gordon/Dutch Square	1
Masonboro South	1
Masonboro South A	1
Springview/Churchill	1
Silva Terra/Arrowhead B	2
Silva Terra/Arrowhead	2
Masonboro South B	2
Gordon/Dutch B	2
Gordon/Dutch A	2
Silva Terra/Arrowhead A	2
Kings Grant	2
Ogden	3
Ogden B	3
Ogden A	3

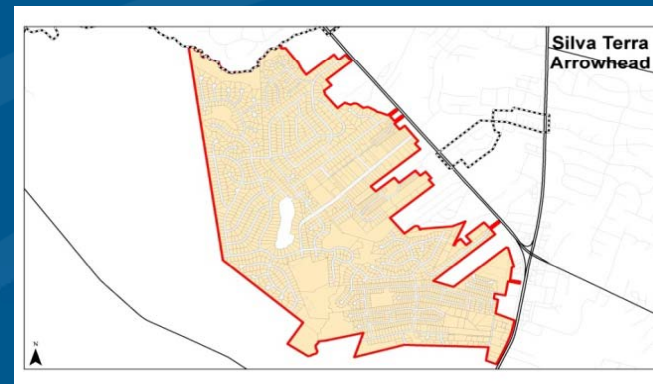
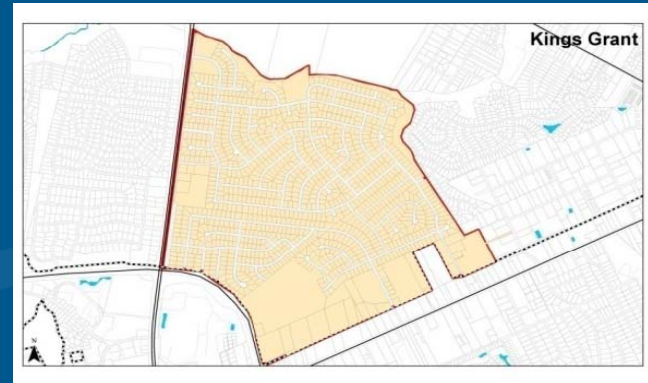
- 1 Substantial improvement needed
- 2 Some improvement needed
- 3 Adequate

Study Areas by Road Ownership

Study Area	Percentage of DOT Roads
Kings Grant	95%
Silva Terra/Arrowhead A	92%
Ogden B	91%
Springview/Churchill	89%
Gordon/Dutch Square	85%
Ogden	80%
Gordon/Dutch B	75%
Masonboro South A	74%
Gordon/Dutch A	72%
Masonboro South	63%
Silva Terra/Arrowhead	61%
Masonboro South B	51%
Ogden A	46%
Silva Terra/Arrowhead B	27%

Criteria for Prioritization

- Existing services
- Service needs
- Ability to provide
- Public input



Establish 2-year phasing plan

Resolution of
Consideration
(odd-numbered years)



Formal annexation
process adoption



(even-numbered years)

Annexation effective June 30
of odd-numbered year

Next Steps

- Council direction on annexation policy
- More study of possible annexation areas
- Public input
- Recommended prioritization of study areas

Next Steps

- Adoption of Comprehensive Annexation Plan & Policies
- Adoption of Resolution of Consideration