

**GENERAL BUSINESS BMPs** are simple things your business can do to help clean up our local waterways.



- ◆ Parking lots are a major source of storm water pollution because runoff picks up motor oil, antifreeze, litter, and dirt on its way to local waterways. Keep parking lots clean to reduce pollution.
- ◆ Do not blow or sweep dirt or trash from parking lots or sidewalks into storm drains or streets.
- ◆ Save room in dumpsters by recycling used cardboard, plastic, and other recyclable materials.
- ◆ Dumpsters can contain hazardous materials that can leak into our waterways. Be sure to cover and close dumpsters. If leaks occur, promptly clean them up with absorbent material, such as kitty litter, that can be easily swept up when dry.
- ◆ *To report toxic spills call 911 and ask for Hazmat!*
- ◆ Devise and educate employees with a spill prevention clean-up plan.
- ◆ Read product labels to determine proper disposal methods. Never pour them on the ground or into storm drains or ditches.
- ◆ Pour mop water down indoor drains and not onto pavement, gutters, storm drains, or ditches.
- ◆ Computers contain hazardous parts. Donate or dispose of them at Household Hazardous Waste (HHW) Day.

*New Hanover County holds an annual HHW Day, call 341-4340 for more information.*

- ◆ Ink cartridges from printer and fax machines contain hazardous wastes which can leak into the environment, degrading our waterways. Recycle them while helping non-profit organizations at the same time.

*Call Cape Fear River Watch, 762-5606, for your free ink cartridge recycling box.*

- ◆ Use alternative chemicals and equipment that can save your business money and help the environment too.

*For more helpful tips, visit: [www.p2pays.org](http://www.p2pays.org)*



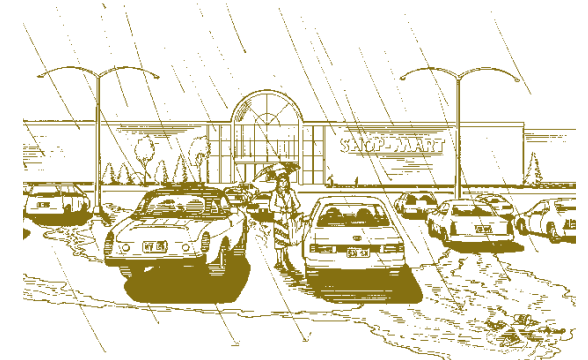
City of Wilmington  
Storm Water Services  
PO Box 1810  
Wilmington, NC 28402  
[www.ci.wilmington.nc.us/pubservices/  
stormwater/stormwater.htm](http://www.ci.wilmington.nc.us/pubservices/stormwater/stormwater.htm)



**YOU are the SOLUTION to storm water pollution!**



**S**TORM WATER RUNOFF is a major pollution threat to local waterways such as Burnt Mill Creek and Greenfield Lake. Storm water runoff is rainwater or irrigation water that cannot soak into the ground. Instead, it flows off impervious (hard) surfaces such as streets, rooftops, and parking lots, and carries pollutants such as motor oil, pet waste, fertilizer, and litter directly into our waterways - untreated!



This brochure lists several **Best Management Practices (BMP's)** that can assist your business in protecting and improving Wilmington's waterways.



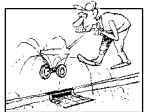
- LITTER** clogs storm drains and ditches, which can cause flooding. Litter is also transported into waterways causing numerous problems for humans and wildlife.
- ◆ Cigarette butts are trash too; dispose of them properly.
  - ◆ Provide adequate trash cans with lids at your business.
  - ◆ Sweep up litter and debris from your parking lot that may otherwise travel to storm drains.
  - ◆ Reduce, reuse, and recycle whenever possible.



- PET WASTE** is a health hazard and water pollutant. It contains bacteria, viruses, parasites, and nutrients that can cause shellfish bed closures, severe algae blooms, recreational water closures and human health problems.
- ◆ Encourage patrons to clean up after their pets.
  - ◆ If possible, post signs and bags to educate and encourage patrons to clean up after their pets.



- YARD WASTE** can cause flooding by clogging storm drains and drainage routes. In waterways, yard waste can cause algae blooms, oxygen depletion, and fish kills.
- ◆ Ask your landscaper to avoid blowing yard waste into storm drains, ditches, or streets (*City Ordinance*).
  - ◆ Compost leaves and grass clippings and use as mulch.
  - ◆ Save money by grasscycling, or leaving grass clippings on the lawn to act as a natural fertilizer.



- FERTILIZERS** contain nitrogen and phosphorous which encourage harmful algae growth in waterways. When algae decomposes, it consumes oxygen in the water, which is vital to fish and aquatic life.
- ◆ Save time and money spent on unnecessary fertilizer by getting a soil test.
- Call the New Hanover Cooperative Extension, 452-6393, for a free soil testing kit.**
- ◆ Use organic fertilizers, which are safer for the environment.
  - ◆ Grasscycle! Save your business money by leaving grass clippings on the lawn as a natural fertilizer.
  - ◆ Fertilize sparingly and never before it rains.



- PESTICIDES & HERBICIDES** not only kill the pests you don't want, but also affect beneficial plants and insects as well.
- ◆ Use alternatives, such as natural predators like ladybugs.
  - ◆ Install native plants to reduce irrigation needs and the application of pesticides and herbicides.
  - ◆ Use pesticides sparingly, as a last resort, and never before it rains.

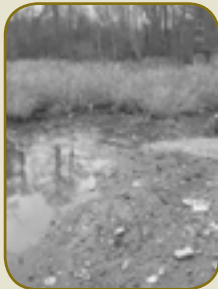


- OVER-WATERING** your lawn can cause lawn disease and can transport fertilizers, pesticides, and yard waste into waterways.
- ◆ Irrigate early in the morning when the soil is dry for optimum absorption and disease prevention.
  - ◆ Install a rain sensor to turn off sprinklers in the rain.
  - ◆ Adjust your sprinklers to water the landscape, not the sidewalk or parking lot.
  - ◆ Save money on your water bill by installing a rain barrel under downspouts. Add driplines to feed water directly to your plants.



- EROSION** allows harmful sediment to reach our waterways, clouding streams and blocking sunlight needed for aquatic life.
- ◆ Stabilize bare soil with grass, plants, or mulch to decrease erosion.
  - ◆ Follow all construction site laws and practices.
  - ◆ Do not blow or sweep dirt from sidewalks or parking lots into streets or storm drains.

*Ask your landscaping company to follow these tips!*



*Burnt Mill Creek (left)  
Greenfield Lake (above)*



- REMODELING & CONSTRUCTION** involves debris and toxic chemicals which are potential sources of water pollution.
- ◆ Schedule excavation during dry weather when debris is less likely to be washed away.
  - ◆ Cover outside materials when not being used.
  - ◆ Limit the amount of vegetation being disturbed; install plants to act as buffers.
  - ◆ Use environmentally friendly water-based paints and rinse paint brushes in household sinks.
  - ◆ Dispose of excess paint and thinner at the New Hanover County Landfill or at the annual Household Hazardous Waste Collection Day.



*In Wilmington, runoff eventually drains into the Cape Fear River or Intracoastal Waterway.*



- RESTAURANTS** require the use of cooking oil and grease, which when not disposed of properly, can clog sanitary sewer pipes. This can lead to an overflow of untreated wastewater into the environment and into waterways.
- ◆ Dispose of oil and grease by installing and properly maintaining grease traps.
  - ◆ Wash greasy equipment in designated areas.
  - ◆ Avoid washing kitchen mats and garbage containers where debris may flow into storm drains.
  - ◆ Dumpsters may contain oil and grease; always cover them to decrease runoff. When spills occur, clean them up immediately with absorbent material like sawdust or kitty litter. Be sure to collect this material too.
  - ◆ Oil and grease should always be disposed of in the proper manner.

*For more information about proper restaurant oil and grease disposal, contact the City of Wilmington Environmental Services Division, 343-3910.*