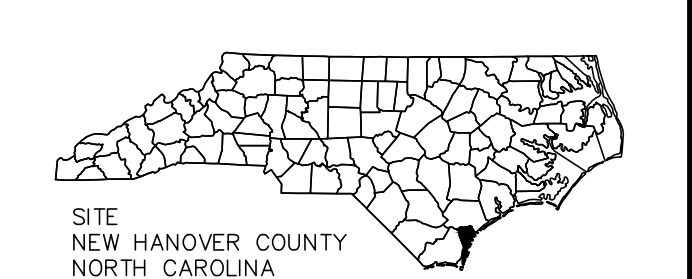
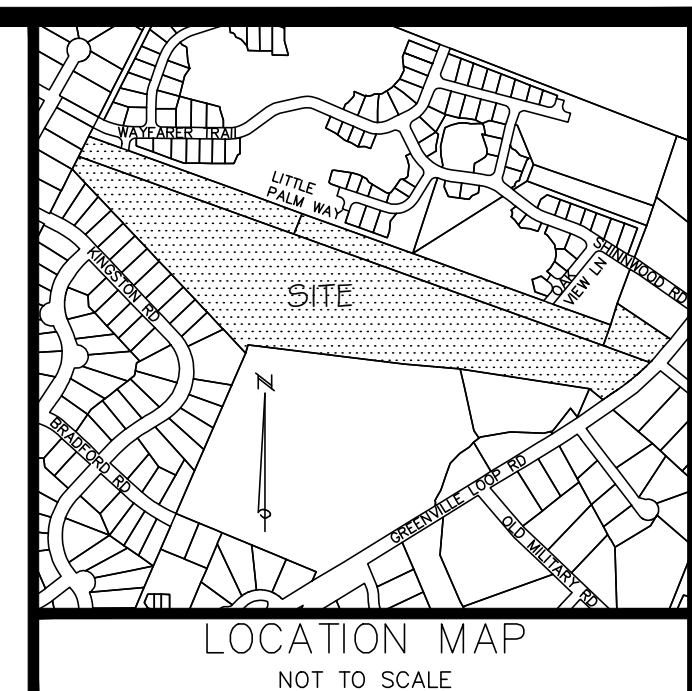


- NOTES:
1. BY GRAPHIC PLOTTING ONLY, THIS TRACT IS LOCATED IN ZONE "X" ACCORDING TO THE FEDERAL EMERGENCY MANAGEMENT AGENCY'S FLOOD INSURANCE RATE MAP, COMMUNITY-PANEL NUMBER 3720314600 K & 3720315600 K DATED 8/28/2018.
 2. THIS SURVEY HAS BEEN PREPARED WITHOUT BENEFIT OF A TITLE REPORT AND MAY NOT INDICATE ALL ENCUMBRANCES ON THE PROPERTY OR OTHER MATTERS THAT SUCH A REPORT MIGHT REVEAL.
 3. PROPERTY IS SUBJECT TO ANY AND ALL EASEMENTS, RESTRICTIVE COVENANTS, RIGHT OF WAYS OF RECORD, GOVERNMENTAL ORDINANCES AND/OR REQUIREMENTS WHICH MAY LIMIT THE USE OF THIS PROPERTY, WHETHER SHOWN OR NOT SHOWN ON THIS MAP.
 4. THIS SURVEY REFLECTS THE RESULTS OF A NEW AND UPDATED SURVEY OF THE PROPERTY SHOWN, AREAS, COURSES, & DISTANCES MAY VARY FROM PREVIOUS DATA OF RECORD.
 5. THIS TOPOGRAPHIC MAP WAS GENERATED USING "LIDAR USA'S" SURVEYOR 32" DRONE TECHNOLOGY. WHILE LIDAR PROVIDES HIGH ACCURACY OVER FLAT, HOMOGENEOUS TERRAIN, ITS PRECISION MAY DECREASE IN AREAS WITH VARIABLE TOPOGRAPHY, DENSE VEGETATION, OR OTHER ENVIRONMENTAL COMPLEXITIES. DESPITE EFFORTS TO ENSURE DATA QUALITY, THIS MAP MAY INCLUDE ERRORS, OMISSIONS, OR INACCURACIES DUE TO TECHNICAL AND ENVIRONMENTAL LIMITATIONS. IT IS NOT INTENDED FOR USE AS THE SOLE SOURCE FOR CRITICAL DECISION-MAKING, ENGINEERING, OR CONSTRUCTION PURPOSES.
 6. ALL ELEVATIONS SHOWN HEREON BASED ON VERTICAL DATUM: NAVD '88
 7. ALL HORIZONTAL DISTANCES SHOWN HEREON BASED ON NAD83 (NSRS 2011)
 8. THIS DRAWING IS CONSIDERED PRELIMINARY UNLESS SIGNED AND SEALED BY A PROFESSIONAL LICENSED SURVEYOR.
 9. WETLAND AREAS SHOWN WERE FLAGGED BY SOUTHERN ENVIRONMENTAL GROUP, INC. JOB NUMBER: 015-077.03, DATED 8/29/2022. WETLANDS LOCATED ONLY ON #6325, PARCEL #R06200-003-033-000. NO OTHER FLAGGED WETLAND AREAS WERE LOCATED AS A RESULT OF THIS SURVEY.
 10. THE LOCATION UTILITIES SHOWN HEREON ARE FROM OBSERVED EVIDENCE OF ABOVE GROUND APPURTENANCES ONLY. THE SURVEYOR WAS NOT PROVIDED WITH UNDERGROUND PLANS OR SURFACE GROUND MARKINGS TO DETERMINE THE LOCATION OF SUBTERRANEAN USES.

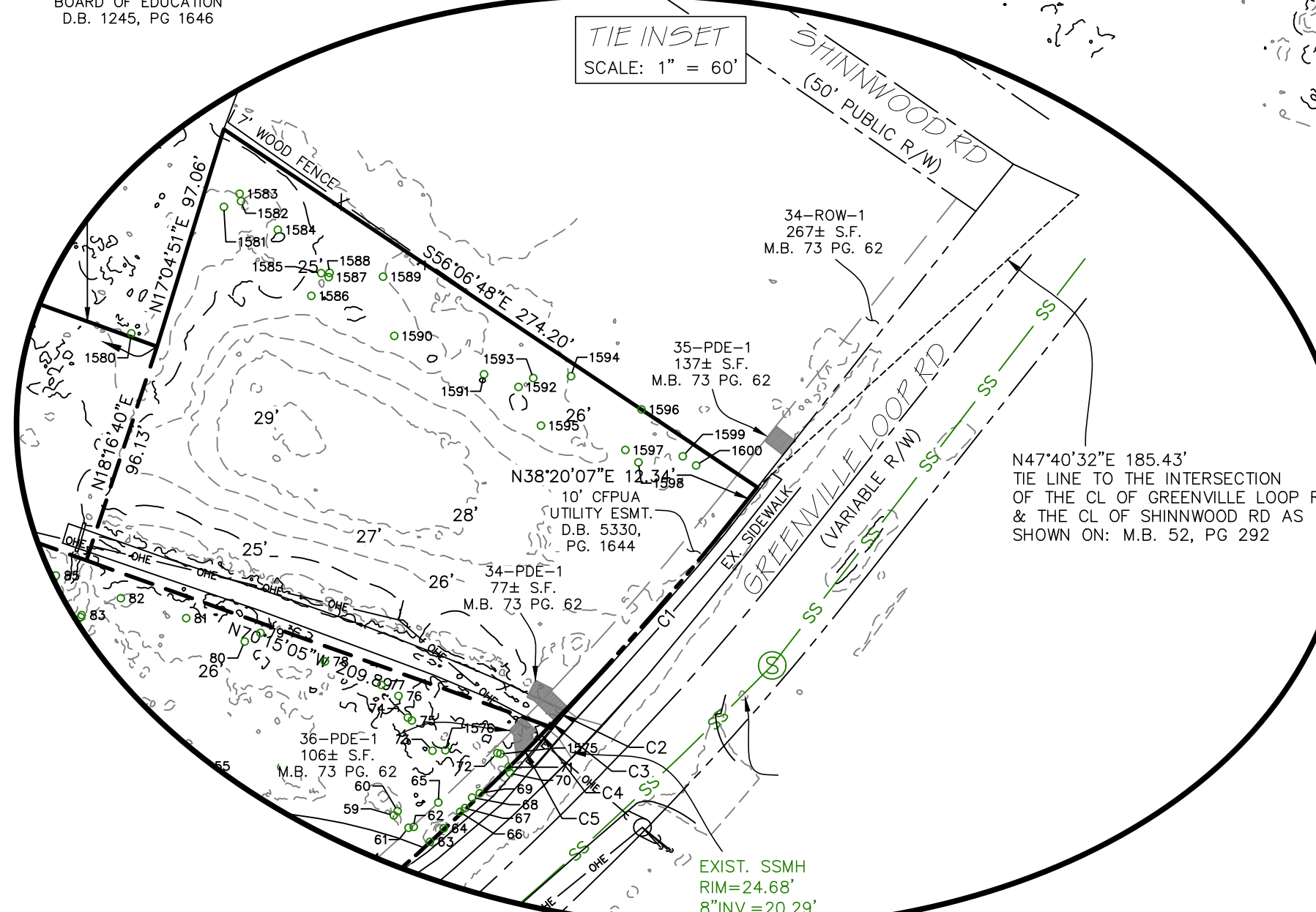


- LEGEND
- EXISTING IRON
 - SET IRON
 - CALCULATED POINT
 - CONCRETE MONUMENT
 - MAG NAIL
 - ★ FIRE HYDRANT
 - ★ LIGHT POLE
 - ★ POWER POLE
 - SANITARY SEWER CLEANOUT
 - SANITARY SEWER MANHOLE
 - WATER VALVE
 - CENTER LINE
 - - - R/W LINE
 - - - ADJACENT PROPERTY LINE
 - - - EASEMENT LINE
 - - - OVERHEAD ELECTRICAL LINE
 - - - WATER LINE
 - - - SANITARY SEWER LINE
 - - - SETBACK LINE
 - - - SUBJECT TRACT BOUNDARY LINE
 - - - INTERNAL TRACT BOUNDARY LINE (TO BE ABANDONED)

I CERTIFY THAT THIS MAP DRAWN UNDER MY SUPERVISION FROM AN ACTUAL SURVEY MADE UNDER MY SUPERVISION (DEED DESCRIPTIONS IN DEED BOOK 6739, PAGE 2371, DEED BOOK 6739, PAGE 2375, DEED BOOK 6763, PAGE 2506, & DEED BOOK 6812, PAGE 1758); THAT THE BOUNDARIES NOT SURVEYED ARE INDICATED AS DRAWN FROM INFORMATION SHOWN HEREON; THAT THE RATIO OF PRECISION IS 1:10,000+; AND THAT THIS MAP MEETS THE REQUIREMENTS OF THE STANDARDS OF PRACTICE FOR LAND SURVEYING IN NORTH CAROLINA (21 NCAC 56.1600), THIS 11th DAY OF MARCH, 2026.



Clarito F. Corpus, PLS L-5046



NEW HANOVER COUNTY REGISTRY REFERENCES:

MAP BOOK 10, PAGE 38	MAP BOOK 61, PAGE 113
MAP BOOK 26, PAGE 64	MAP BOOK 73, PAGE 62
MAP BOOK 29, PAGE 190	DEED BOOK 1245, PAGE 1646
MAP BOOK 31, PAGE 17	DEED BOOK 5330, PAGE 1644
MAP BOOK 33, PAGE 58	DEED BOOK 6739, PAGE 2371
MAP BOOK 58, PAGE 369	DEED BOOK 6739, PAGE 2375
MAP BOOK 59, PAGE 319	DEED BOOK 6763, PAGE 2506
MAP BOOK 60, PAGE 115	DEED BOOK 6812, PAGE 1758
MAP BOOK 61, PAGE 40	DEED BOOK 6829, PAGE 2790

SITE AREA DATA: AREAS BY COORDINATE METHOD

TOTAL COMBINED AREA: 1,094,783 S.F. OR 25.13 AC.±

LOT AREAS:

#6325	824,323 S.F.	OR 18.92 AC.±
#6335	38,731 S.F.	OR 0.89 AC.±
#6341	43,612 S.F.	OR 1.00 AC.±
#6345	100,341 S.F.	OR 2.30 AC.±

Curve Table

Curve #	Length	Radius	Delta	Ch. Direction	Ch. Length
C1	111.65'	1208.15'	5.29'	N40°59'42"E	111.61'
C2	8.00'	1208.15'	0.38'	N43°49'55"E	8.00'
C3	3.35'	1208.15'	0.16'	N44°06'04"E	3.35'
C4	9.69'	1208.15'	0.46'	N44°24'37"E	9.69'
C5	10.17'	1208.15'	0.48'	N44°52'53"E	10.17'
C6	137.40'	1208.15'	6.52'	N48°22'49"E	137.32'
C7	8.01'	1208.15'	0.38'	N51°49'42"E	8.01'
C8	98.04'	1208.15'	4.65'	N54°20'34"E	98.01'



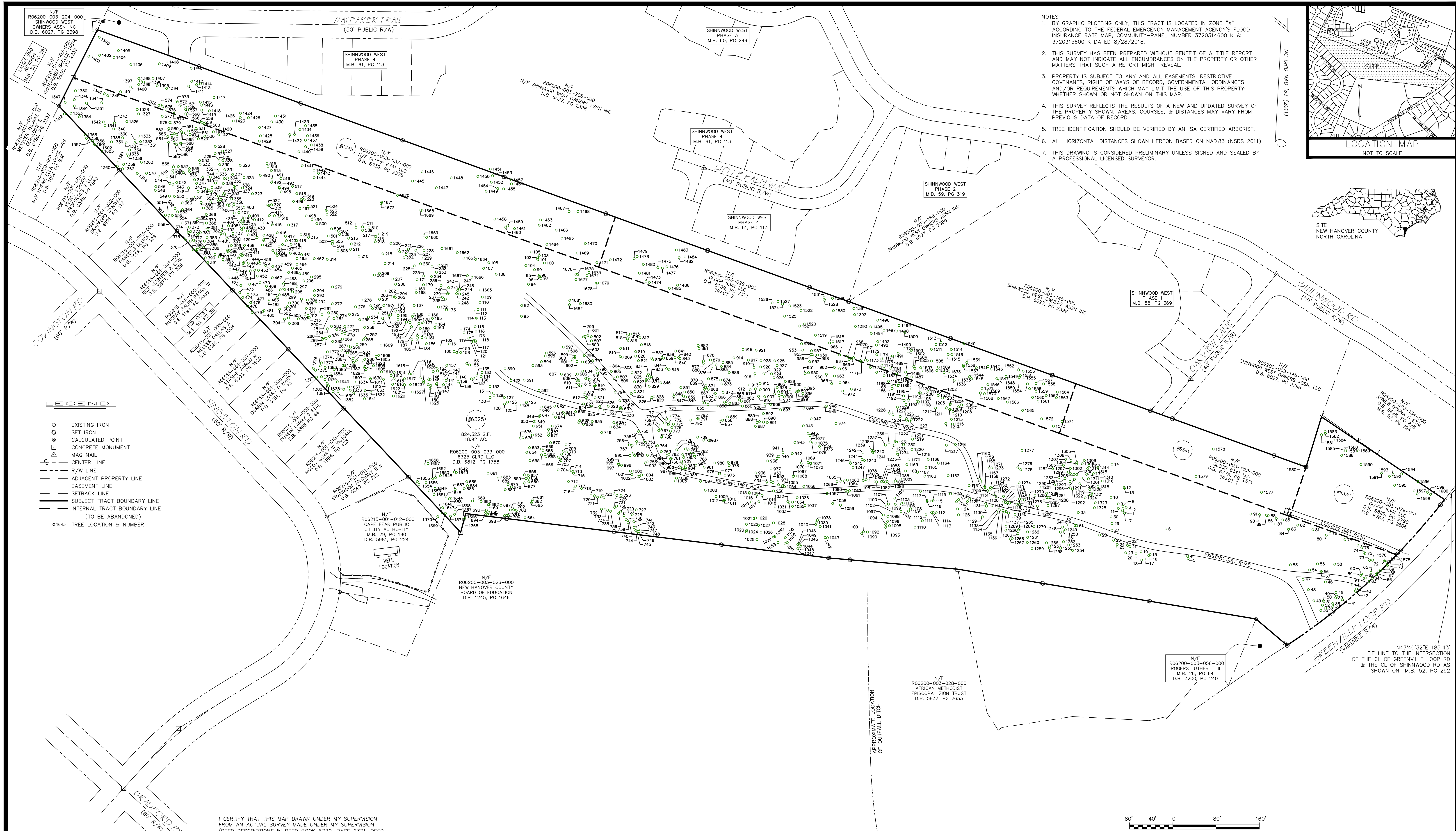
Bateman Civil Survey Company
Engineers • Surveyors • Planners
30 CIVIL AVE, WILMINGTON, NC 28403
Phone: 910.772.9113 Fax: 910.772.9128
NCBELS FIRM No. C-2378

BOUNDARY & TOPOGRAPHIC SURVEY
OF
6325 GREENVILLE LOOP RD
PARID: R06200-003-033-000
ALL ADJACENT LOTS TO THE NORTH:
#6335, PARID: R06200-003-029-001,
#6341, PARID: R06200-003-029-000,
#6345, PARID: R06200-003-037-000

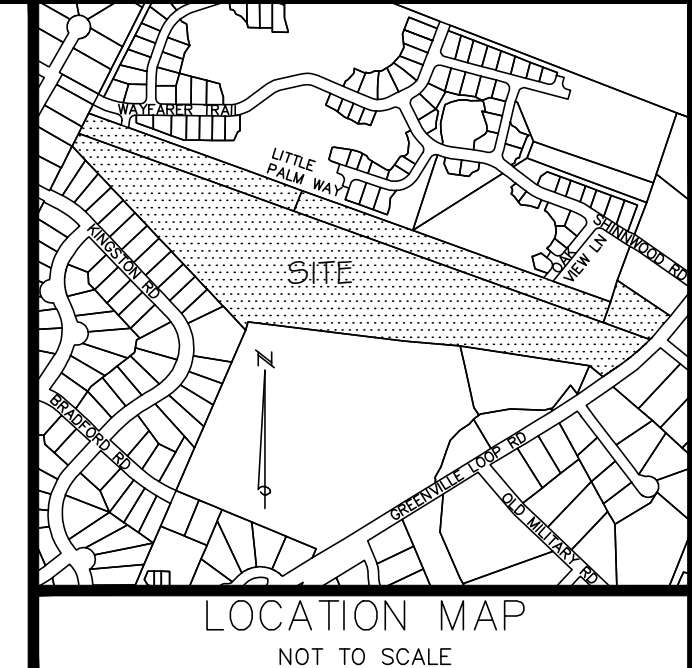
AS RECORDED IN DEED BOOK 6739, PAGE 2371, DEED BOOK 6739, PAGE 2375, DEED BOOK 6763, PAGE 2506, DEED BOOK 6812, PAGE 1758, DEED BOOK 6812, PAGE 1758 OF THE NEW HANOVER COUNTY REGISTRY

CITY OF WILMINGTON WILMINGTON TOWNSHIP NEW HANOVER COUNTY NORTH CAROLINA
Scale: 1"=80' March 11, 2026

Field By: DO/TB/JS/CF
Drawn By: CFC & DBG
Checked By: CFC
Scale: 1"=80'
Project Number: 26W010
S-1 of 4



- NOTES:
1. BY GRAPHIC PLOTTING ONLY, THIS TRACT IS LOCATED IN ZONE "X" ACCORDING TO THE FEDERAL EMERGENCY MANAGEMENT AGENCY'S FLOOD INSURANCE RATE MAP, COMMUNITY-PANEL NUMBER 3720314600 K & 3720315600 K DATED 8/28/2018.
 2. THIS SURVEY HAS BEEN PREPARED WITHOUT BENEFIT OF A TITLE REPORT AND MAY NOT INDICATE ALL ENCUMBRANCES ON THE PROPERTY OR OTHER MATTERS THAT SUCH A REPORT MIGHT REVEAL.
 3. PROPERTY IS SUBJECT TO ANY AND ALL EASEMENTS, RESTRICTIVE COVENANTS, RIGHT OF WAYS OF RECORD, GOVERNMENTAL ORDINANCES AND/OR REQUIREMENTS WHICH MAY LIMIT THE USE OF THIS PROPERTY; WHETHER SHOWN OR NOT SHOWN ON THIS MAP.
 4. THIS SURVEY REFLECTS THE RESULTS OF A NEW AND UPDATED SURVEY OF THE PROPERTY SHOWN, AREAS, COURSES, & DISTANCES MAY VARY FROM PREVIOUS DATA OF RECORD.
 5. TREE IDENTIFICATION SHOULD BE VERIFIED BY AN ISA CERTIFIED ARBORIST.
 6. ALL HORIZONTAL DISTANCES SHOWN HEREON BASED ON NAD83 (NRSR 2011)
 7. THIS DRAWING IS CONSIDERED PRELIMINARY UNLESS SIGNED AND SEALED BY A PROFESSIONAL LICENSED SURVEYOR.



- LEGEND**
- EXISTING IRON
 - SET IRON
 - ⊙ CALCULATED POINT
 - ⊠ CONCRETE MONUMENT
 - ⊡ MAG NAIL
 - CENTER LINE
 - - - R/W LINE
 - - - ADJACENT PROPERTY LINE
 - - - EASEMENT LINE
 - - - SETBACK LINE
 - - - SUBJECT TRACT BOUNDARY LINE
 - - - INTERNAL TRACT BOUNDARY LINE (TO BE ABANDONED)
 - 1643 TREE LOCATION & NUMBER

I CERTIFY THAT THIS MAP DRAWN UNDER MY SUPERVISION FROM AN ACTUAL SURVEY MADE UNDER MY SUPERVISION (DEED DESCRIPTIONS IN DEED BOOK 6739, PAGE 2371, DEED BOOK 6739, PAGE 2375, DEED BOOK 6763, PAGE 2506, & DEED BOOK 6812, PAGE 1758); THAT THE BOUNDARIES NOT SURVEYED ARE INDICATED AS DRAWN FROM INFORMATION SHOWN HEREON; THAT THE RATIO OF PRECISION IS 1:10,000+; AND THAT THIS MAP MEETS THE REQUIREMENTS OF THE STANDARDS OF PRACTICE FOR LAND SURVEYING IN NORTH CAROLINA (21 NCAC 56.1600), THIS 11th DAY OF MARCH, 2026.



Clarito F. Corpus
CLARITO F. CORPUS, PLS L-5046



Bateman Civil Survey Company
Engineers • Surveyors • Planners
30 CIVIL AVE, WILMINGTON, NC 28403
Phone: 910.772.9113 Fax: 910.772.9128
NCBELS FIRM No. C-2378

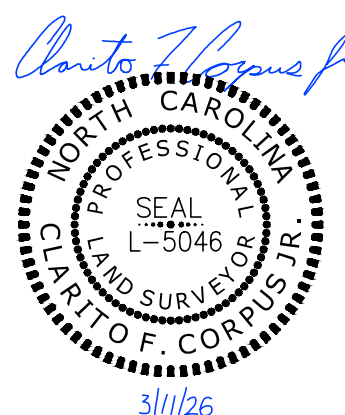
TREE SURVEY
OF
6325 GREENVILLE LOOP RD
PARID: RO6200-003-033-000
ALL ADJACENT LOTS TO THE NORTH:
#6335, PARID: RO6200-003-029-001,
#6341, PARID: RO6200-003-029-000,
#6345, PARID: RO6200-003-037-000

AS RECORDED IN DEED BOOK 6739, PAGE 2371, DEED BOOK 6739, PAGE 2375, DEED BOOK 6763, PAGE 2506 DEED BOOK 6829, PAGE 2790, & DEED BOOK 6812, PAGE 1758 OF THE NEW HANOVER COUNTY REGISTRY

CITY OF WILMINGTON WILMINGTON TOWNSHIP NEW HANOVER COUNTY NORTH CAROLINA
Scale: 1"=80' March 11, 2026

Field By: DO/TB/JS/CF
Drawn By: CFC & DBG
Checked By: CFC
Scale: 1"=80'
Project Number: 26W010
S-2 of 4

Tree #	Species	Diameter	Tree #	Species	Diameter	Tree #	Species	Diameter	Tree #	Species	Diameter	Tree #	Species	Diameter
1261	MAGNOLIA	8"	1351	PINE	12"	1441	PINE	15"	1531	PINE	20"	1621	CREPE MYRTLE TWIN	8"
1262	OAK	10"	1352	PINE	14"	1442	PINE	13"	1532	OAK	12"	1622	CREPE MYRTLE TWIN	8"
1263	PINE	14"	1353	PINE	16"	1443	PINE	12"	1533	PINE	14"	1623	MAGNOLIA	10"
1264	OAK	10"	1354	PINE	12"	1444	PINE	14"	1534	PINE	16"	1624	PINE	14"
1265	OAK	8"	1355	MAPLE	12"	1445	PINE	16"	1535	PINE	21"	1625	MAGNOLIA	10"
1266	MAGNOLIA	6"	1356	MAPLE	6"	1446	PINE	15"	1536	OAK	9"	1626	MAGNOLIA	10"
1267	PINE	14"	1357	MAPLE	12"	1447	PINE	14"	1537	OAK	10"	1627	PINE	14"
1268	PINE	14"	1358	MAPLE	6"	1448	MAGNOLIA TRIPLE	6"	1538	PINE	14"	1628	PINE	14"
1269	MAGNOLIA	6"	1359	PINE	12"	1449	PINE	14"	1539	PINE	12"	1629	PINE	14"
1270	PINE	12"	1360	GUM CLUSTER	8"	1450	PINE	14"	1540	OAK	10"	1630	PINE	14"
1271	PINE	14"	1361	PINE	16"	1451	MAGNOLIA TWIN	12"	1541	OAK	10"	1631	PINE	12"
1272	PINE	14"	1362	PINE	16"	1452	PINE	13"	1542	MAGNOLIA	8"	1632	PINE	12"
1273	PINE	14"	1363	PINE	14"	1453	MAGNOLIA CLUSTER	6"	1543	OAK	17"	1633	PINE	12"
1274	OAK	12"	1364	PINE	22"	1454	PINE	14"	1544	MAGNOLIA	11"	1634	PINE	12"
1275	OAK	14"	1365	PINE	16"	1455	MAGNOLIA TWIN	8"	1545	PINE	12"	1635	PINE	14"
1276	OAK	14"	1366	PINE	10"	1456	PINE	13"	1546	PINE	12"	1636	PINE	12"
1277	GUM	10"	1367	PINE	18"	1457	PINE	13"	1547	PINE	12"	1637	PINE	14"
1278	MAPLE	10"	1368	PINE	12"	1458	MAGNOLIA	6"	1548	PINE	14"	1638	PINE	12"
1279	PINE	18"	1369	PINE	16"	1459	PINE	13"	1549	GUM	15"	1639	PINE	12"
1280	PINE	22"	1370	PINE	14"	1460	PINE	12"	1550	HOLLY CLUSTER	5"	1640	PINE	12"
1281	GUM	10"	1371	OAK	8"	1461	MAGNOLIA CLUSTER	6"	1551	PINE	15"	1641	PINE	12"
1282	MAGNOLIA	6"	1372	PINE	22"	1462	MAGNOLIA CLUSTER	12"	1552	PINE	17"	1642	PINE	14"
1283	PINE	20"	1373	PINE	18"	1463	PINE	23"	1553	PINE	12"	1643	CREPE MYRTLE	12"
1284	GUM	10"	1374	CREPE MYRTLE TWIN	6"	1464	MAGNOLIA	11"	1554	PINE	14"	1644	PINE	14"
1285	PINE	20"	1375	PINE	12"	1465	PINE	14"	1555	PINE	12"	1645	PINE	14"
1286	MAGNOLIA	12"	1376	CREPE MYRTLE CLUSTER	6"	1466	PINE	14"	1556	PINE	18"	1646	PINE	14"
1287	OAK	12"	1377	PINE	20"	1467	MAGNOLIA CLUSTER	9"	1557	OAK	13"	1647	PINE	12"
1288	OAK	12"	1378	PINE	16"	1468	MAGNOLIA CLUSTER	9"	1558	PINE	12"	1648	PINE	14"
1289	OAK	12"	1379	CREPE MYRTLE CLUSTER	8"	1469	PINE	12"	1559	PINE	14"	1649	GUM	12"
1290	MAGNOLIA	10"	1380	PINE	12"	1470	PINE	21"	1560	PINE	14"	1650	MAGNOLIA TWIN	10"
1291	MAGNOLIA	6"	1381	PINE	18"	1471	MAGNOLIA	10"	1561	OAK	10"	1651	PINE	14"
1292	OAK	10"	1382	MAPLE	10"	1472	PINE	19"	1562	PINE	12"	1652	PINE	14"
1293	MAGNOLIA	6"	1383	PINE	18"	1473	MAGNOLIA CLUSTER	7"	1563	PINE	12"	1653	PINE	16"
1294	MAGNOLIA	6"	1384	GUM	12"	1474	PINE	21"	1564	PINE	13"	1654	PINE	12"
1295	PINE	14"	1385	CREPE MYRTLE	6"	1475	OAK	14"	1565	OAK	10"	1655	MAGNOLIA	10"
1296	MAGNOLIA	8"	1386	PINE	26"	1476	PINE	20"	1566	OAK	15"	1656	HOLLY	6"
1297	MAGNOLIA	8"	1387	CREPE MYRTLE	6"	1477	MAGNOLIA TWIN	9"	1567	OAK	10"	1657	PINE	14"
1298	OAK TWIN	10"	1388	CREPE MYRTLE	6"	1478	PINE	15"	1568	PINE	15"	1658	OAK TWIN	10"
1299	OAK	10"	1389	PINE	12"	1479	PINE	15"	1569	PINE	13"	1659	SYCAMORE	14"
1300	OAK	16"	1390	PINE	18"	1480	OAK	14"	1570	PINE	13"	1660	PINE	12"
1301	MAGNOLIA	8"	1391	PINE	20"	1481	PINE	10"	1571	OAK TWIN	8"	1661	PINE	12"
1302	OAK	10"	1392	MAGNOLIA	10"	1482	PINE	24"	1572	OAK TWIN	10"	1662	PINE	14"
1303	OAK	12"	1393	GUM	12"	1483	OAK	14"	1573	OAK	12"	1663	PINE	14"
1304	OAK TWIN	12"	1394	PINE	17"	1484	PINE	13"	1574	OAK	14"	1664	PINE	14"
1305	OAK	12"	1395	PINE	12"	1485	PINE	12"	1575	PINE	16"	1665	PINE	12"
1306	MAGNOLIA	12"	1396	PINE	12"	1486	PINE	15"	1576	GUM TWIN	12"	1666	PINE	12"
1307	OAK TWIN	8"	1397	PINE	14"	1487	PINE	16"	1577	OAK TWIN	12"	1667	PINE	12"
1308	OAK	12"	1398	PINE	12"	1488	PINE	14"	1578	OAK	28"	1668	PINE	14"
1309	MAGNOLIA	10"	1399	PINE	12"	1489	PINE	14"	1579	GUM	16"	1669	SYCAMORE	14"
1310	MAGNOLIA	6"	1400	MAGNOLIA	11"	1490	PINE	12"	1580	OAK	19"	1670	PINE	12"
1311	MAGNOLIA	6"	1401	PINE	21"	1491	OAK	10"	1581	GUM	15"	1671	GUM	12"
1312	MAGNOLIA	14"	1402	MAGNOLIA	10"	1492	PINE	19"	1582	GUM	15"	1672	PINE	12"
1313	MAGNOLIA	8"	1403	PINE	12"	1493	PINE	13"	1583	GUM	15"	1673	PINE	12"
1314	MAGNOLIA	8"	1404	PINE	12"	1494	PINE	19"	1584	PINE	13"	1674	PINE	12"
1315	MAGNOLIA	8"	1405	MAGNOLIA	11"	1495	PINE	12"	1585	GUM	20"	1675	PINE	16"
1316	OAK	16"	1406	PINE	12"	1496	PINE	18"	1586	GUM	14"	1676	PINE	14"
1317	MAGNOLIA	10"	1407	PINE	12"	1497	PINE	16"	1587	MAGNOLIA TWIN	6"	1677	JUNIPER	18"
1318	MAGNOLIA	8"	1408	PINE	13"	1498	PINE	12"	1588	GUM	12"	1678	PINE	16"
1319	OAK TWIN	10"	1409	PINE	12"	1499	WHITE OAK	12"	1589	PINE	15"	1679	MAGNOLIA	10"
1320	MAGNOLIA	6"	1410	PINE	12"	1500	WHITE OAK	12"	1590	PINE	14"	1680	PINE	18"
1321	OAK	12"	1411	PINE	12"	1501	PINE	18"	1591	PINE	14"	1681	JUNIPER	10"
1322	MAGNOLIA	6"	1412	PINE	14"	1502	PINE	12"	1592	PINE	13"	1682	OAK	10"
1323	OAK	12"	1413	MAGNOLIA CLUSTER	9"	1503	PINE	17"	1593	PINE	18"			
1324	OAK TWIN	14"	1414	PINE	13"	1504	PINE	12"	1594	MAGNOLIA	9"			
1325	MAGNOLIA	6"	1415	PINE	12"	1505	PINE	19"	1595	PINE TWIN	12"			
1326	PINE	12"	1416	PINE	12"	1506	PINE	17"	1596	GUM	20"			
1327	GUM	8"	1417	PINE	13"	1507	MAGNOLIA	6"	1597	PINE	19"			
1328	MAGNOLIA	6"	1418	MAGNOLIA CLUSTER	9"	1508	MAGNOLIA	12"	1598	PINE	20"			
1329	PINE	12"	1419	MAGNOLIA	9"	1509	PINE	17"	1599	GUM	13"			
1330	CREPE MYRTLE CLUSTER	6"	1420	MAGNOLIA	8"	1510	OAK TWIN	12"	1600	GUM	14"			
1331	PINE	18"	1421	PINE	14"	1511	PINE	15"	1601	PINE	12"			
1332	PINE	12"	1422	PINE	14"	1512	MAGNOLIA	10"	1602	PINE	16"			
1333	PINE	14"	1423	PINE	12"	1513	PINE	17"	1603	MAPLE	10"			
1334	CREPE MYRTLE	6"	1424	MAGNOLIA	10"	1514	PINE	13"	1604	CREPE MYRTLE TWIN	12"			
1335	PINE	14"	1425	MAGNOLIA	8"	1515	PINE	17"	1605	OAK	10"			
1336	CREPE MYRTLE TWIN	6"	1426	PINE	12"	1516	PINE	19"	1606	CREPE MYRTLE	10"			
1337	CREPE MYRTLE	6"	1427	PINE	14"	1517	OAK	12"	1607	PINE	12"			
1338	PINE	16"	1428	PINE TWIN	12"	1518	OAK TRIPLE	12"	1608	PINE	14"			
1339	PINE	16"	1429	MAGNOLIA	10"	1519	PINE	20"	1609	PINE	16"			
1340	PINE	16"	1430	PINE	14"	1520	PINE	14"	1610	PINE	18"			
1341	PINE	12"	1431	PINE	14"	1521	PINE	20"	1611	PINE	16"			
1342	PINE	18"	1432	MAGNOLIA	9"	1522	OAK	12"	1612	PINE TWIN	12"			
1343	HOLLY	6"	1433	PINE	15"	1523	PINE	17"	1613	PINE	10"			
1344	PINE	18"	1434	PINE	12"	1524	PINE	14"	1614	OAK CLUSTER	8"			
1345	CREPE MYRTLE TWIN	6"	1435	MAGNOLIA CLUSTER	12"	1525	PINE	14"	1615	PINE	14"			
1346	PINE	18"	1436	PINE	12"	1526	PINE	18"	1616	PINE	18"			
1347	PINE	14"	1437	PINE	14"	1527	PINE	13"	1617	PINE	18"			
1348	PINE	12"	1438	PINE	16"	1528	PINE	20"	1618	OAK TWIN	8"			
1349	OAK	14"	1439	PINE	13"	1529	PINE	19"	1619	CREPE MYRTLE CLUSTER	6"			
1350	PINE	12"	1440	MAGNOLIA	15"	1530	OAK	13"	1620	CREPE MYRTLE	8"			



- NOTES:
- TREE IDENTIFICATION SHOULD BE VERIFIED BY AN ISA CERTIFIED ARBORIST.
 - THIS DRAWING IS CONSIDERED PRELIMINARY UNLESS SIGNED AND SEALED BY A PROFESSIONAL LICENSED SURVEYOR.



Bateman Civil Survey Company
 Engineers • Surveyors • Planners
 30 COVIL AVE, WILMINGTON, NC 28403
 Phone: 910.772.9113 Fax: 910.772.9128
 NCBELS FIRM No. C-2378

TREE SURVEY CHART #2
 OF
6325 GREENVILLE LOOP RD
PARID: RO6200-003-033-000
ALL ADJACENT LOTS TO THE NORTH:
#6335, PARID: RO6200-003-029-001,
#6341, PARID: RO6200-003-029-000,
#6345, PARID: RO6200-003-037-000
 AS RECORDED IN DEED BOOK 6739, PAGE 2371,
 DEED BOOK 6739, PAGE 2375, DEED BOOK 6763, PAGE 2506,
 DEED BOOK 6829, PAGE 2780, & DEED BOOK 6812, PAGE 1758
 OF THE NEW HANOVER COUNTY REGISTRY
 CITY OF WILMINGTON WILMINGTON TOWNSHIP NEW HANOVER COUNTY NORTH CAROLINA
 Scale: N/A March 11, 2026

Field By: DO/TB/JS/CF
 Drawn By: CFC & DBG
 Checked By: CFC
 Scale: N/A
 Project Number: 26W010
S-4 of 4